

PART OF THE W. 1/2 OF SEC. 27, T.7N., R.1E., S.L.B. & M.
IRENE OGDEN SUBDIVISION NO. 1

IN WEBER COUNTY
SCALE 1" = 50'

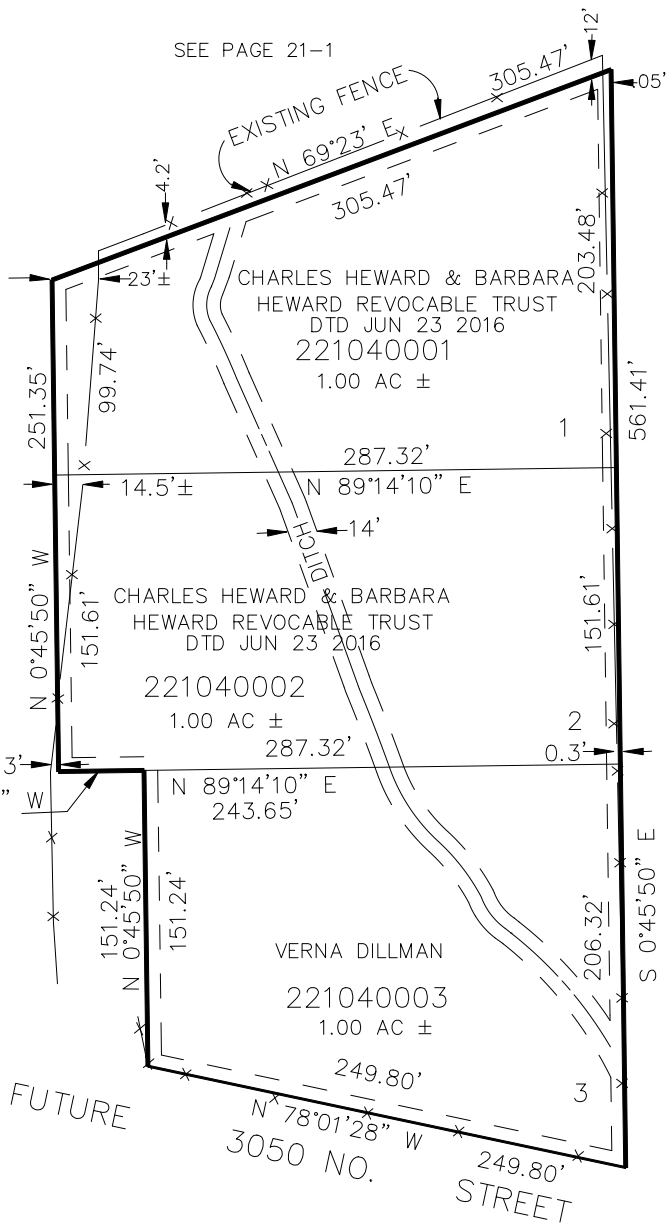
TAXING UNIT: 28

SEE PAGE 21-1

SEE PAGE 21-1

SEE PAGE 21-1

SEE PAGE 21-1



7' UTILITY & DRAINAGE EASEMENTS EACH SIDE OF PROPERTY LINES AS INDICATED BY DASHED LINES EXCEPT AS OTHERWISE SHOWN.

* LOT 4 VACATED
FEB 28, 1991 BK 1595 PG 55

FOR COMPLETE ENG DATA SEE ORIGINAL DEDICATION PLAT IN BOOK 31, PAGE 44 OF RECORDS.